

FLEX SYSTEM

TECHNICAL INFORMATION



**WE
SAVE
LIVES**

SAFETYRESPECT®

CONFIGURATIONS

FLEX FACADE BRACKET

Art.no. 914043, 280 mm
Art.no. 914118, 400 mm
Art.no. 914119, 600 mm

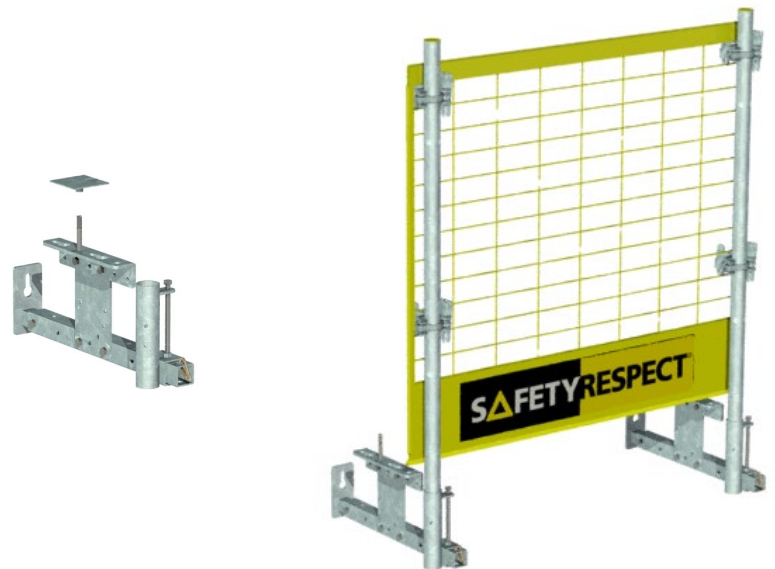
- Attached to wall, 2 × M12.
- Adjustable, 50–525 mm from facade.
- Preferably mounted into cast-in anchors.
- Console weight: 4 kg, 5 kg, 6 kg.



FLEX ROOF GABLE BRACKET

Art.no. 914124

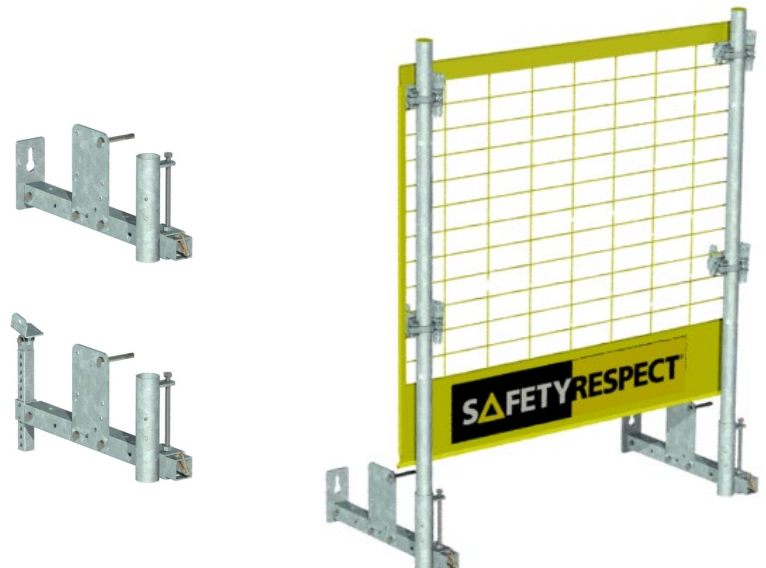
- Attached in the roof base, M12 and gable nut.
- Adjustable configuration.
- Installed with a through bolt.
- Supports against the facade.
- Console weight: 9,1 kg.



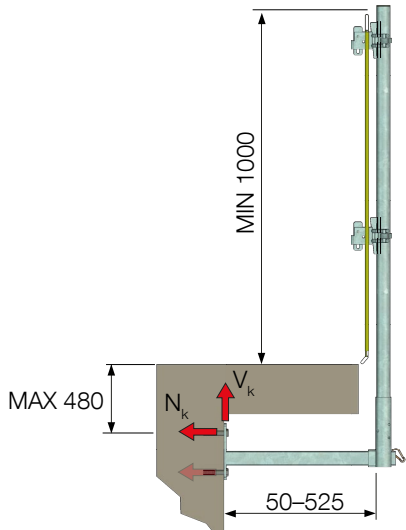
FLEX EAVE BRACKET

Art.no. 914123
Art.no. 914125 with counterhold

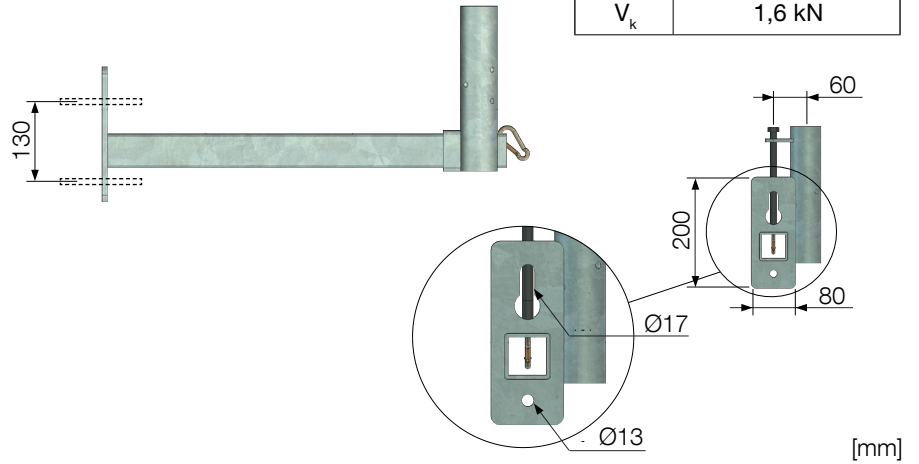
- Attached in the roof frame, M12.
- Adjustable configuration.
- Installed with a through bolt.
- Supports against the facade or the roof frame.
- Console weight: 7,3 kg.



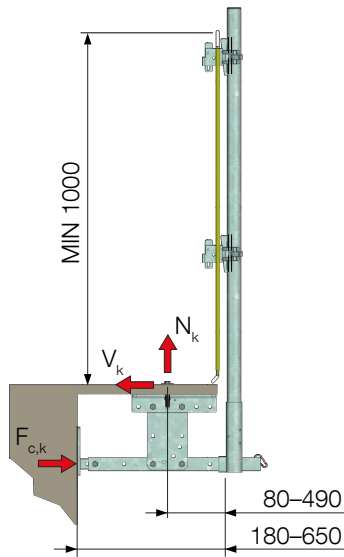
FLEX FACADE BRACKET



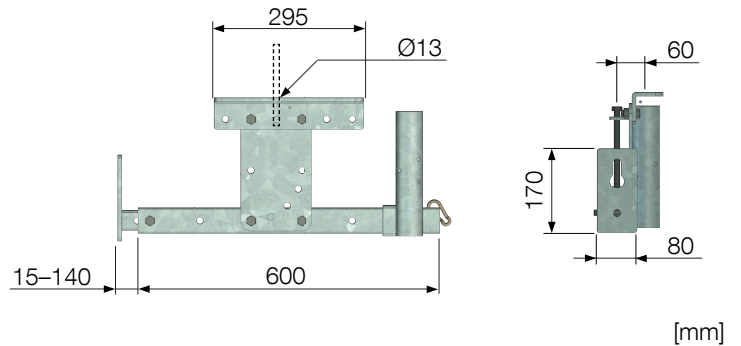
ANCHOR LOADS (Q)*	
N_k	5,3 kN
V_k	1,6 kN



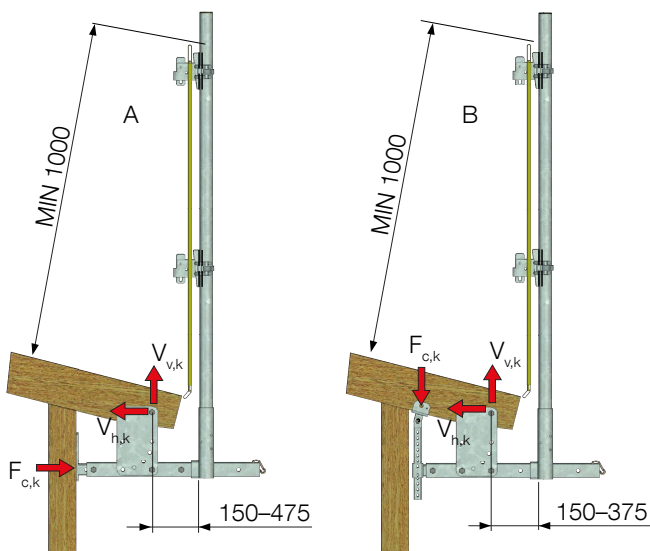
FLEX ROOF GABLE BRACKET



ANCHOR LOADS (Q)*	
N_k	1,6 kN
V_k	2,8 kN
$F_{c,k}$	2,2 kN

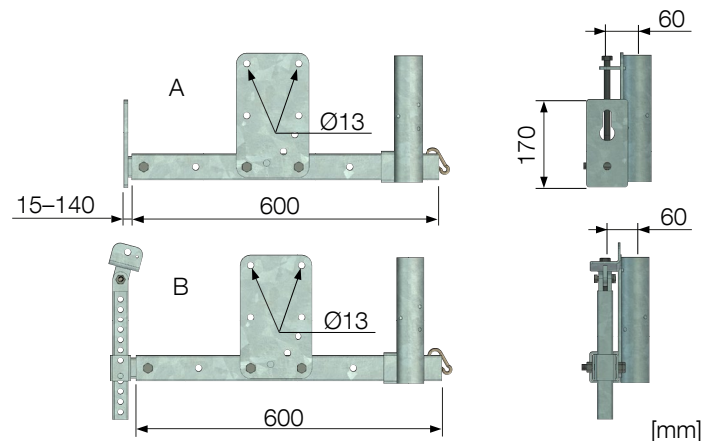


FLEX EAVE BRACKET



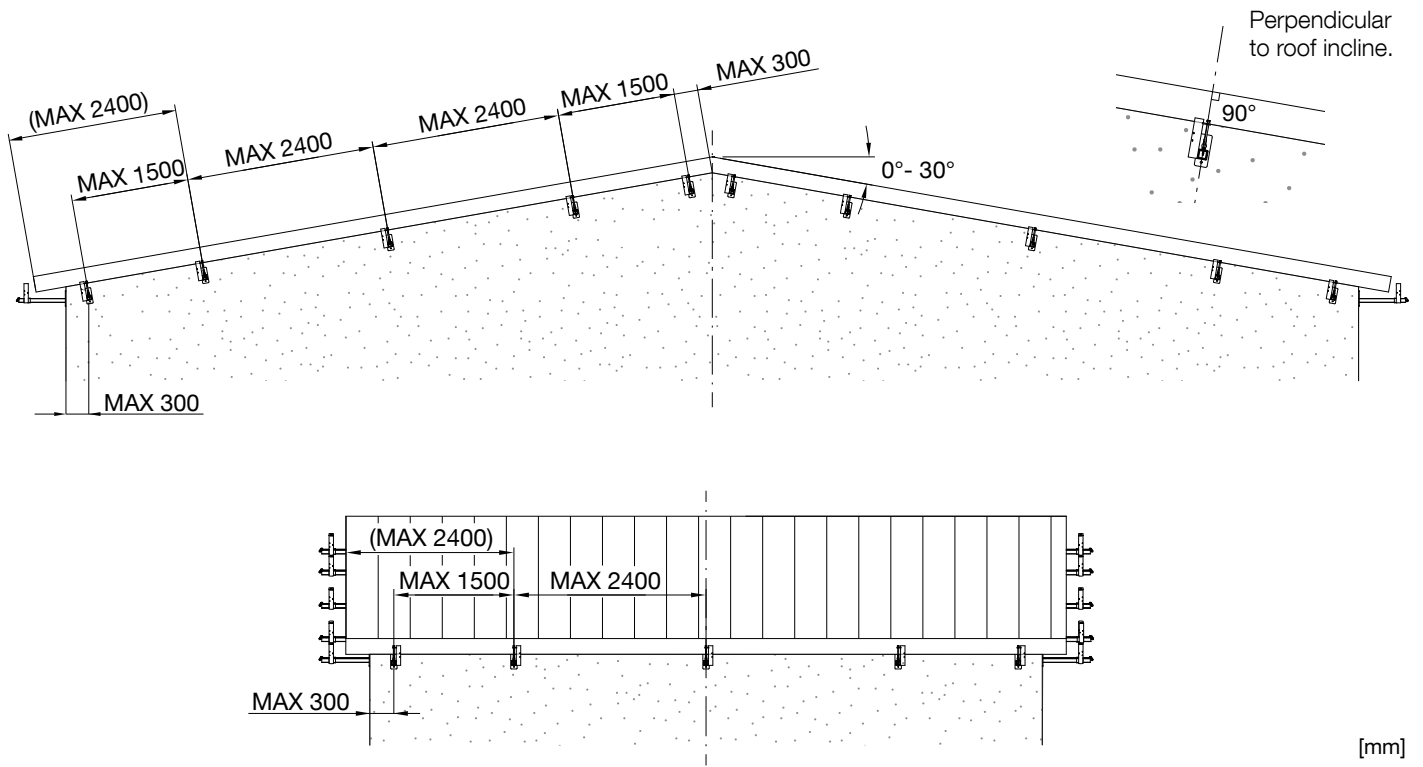
A: ANCHOR LOADS (Q)*	
$V_{h,k}$	3,4 kN
$V_{v,k}$	1,6 kN
$F_{c,k}$	2,8 kN

B: ANCHOR LOADS (Q)*	
$V_{h,k}$	0,8 kN
$V_{v,k}$	5,6 kN
$F_{c,k}$	4,3 kN

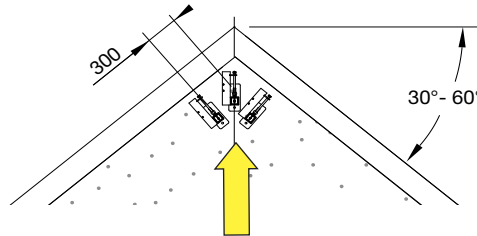


* Per anchor, unfactored ($Q_{k,i}$). EN 13374: $Q_{k,i} \times \gamma_F = E_d < R_d = R_k / \gamma_M (k_{mod})$, where $\gamma_F = 1,5$ and where k_{mod} is used for timber.

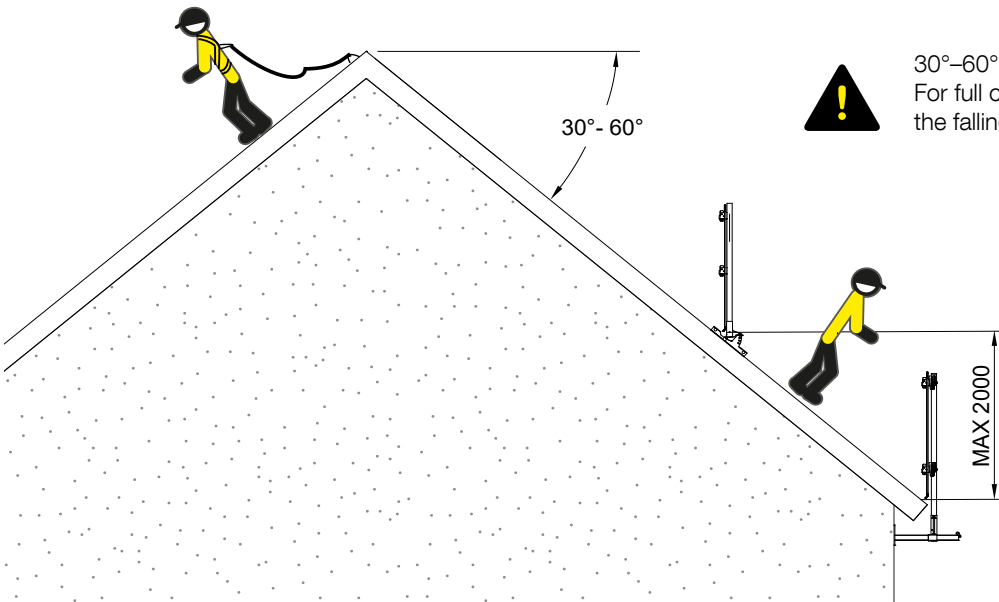
GENERAL PLACEMENT



>30°



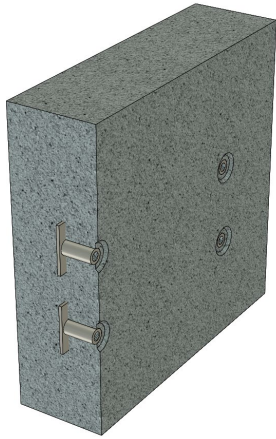
30°-60°
Add one extra console in top of gable.



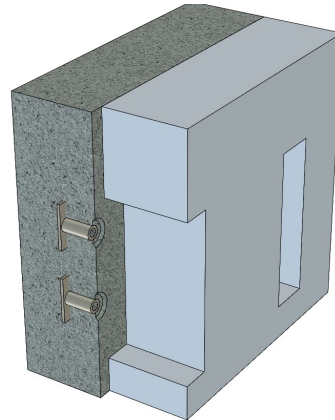
30°-60°
For full compliance with EN 13374 class B, limit the falling height to 2 m or use PFP.

ATTACHMENT METHOD

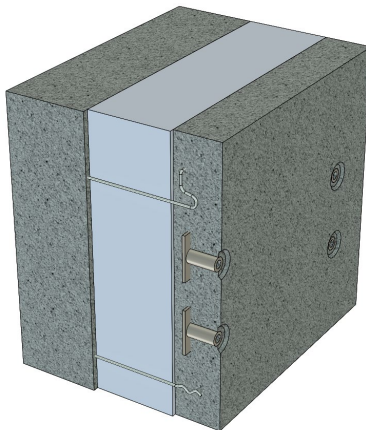
Illustrations are only examples. Attachment method and placing need to be assessed by general contractor/structural engineer.



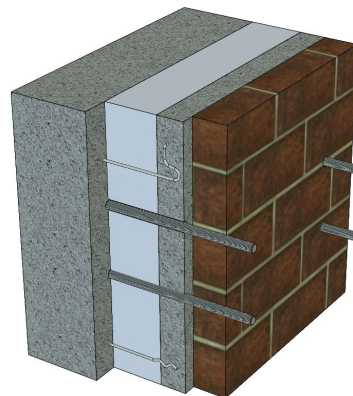
Solid wall with cast-in anchors.



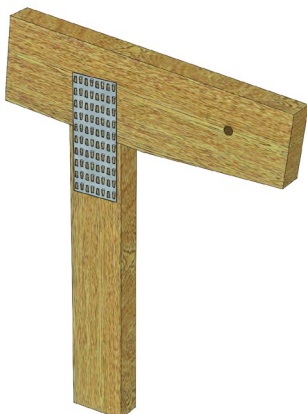
Insulated wall with cast-in anchors, cut-out insulation.



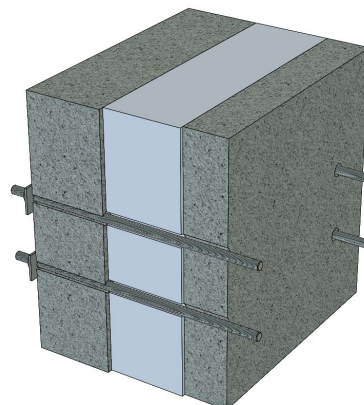
Sandwich wall with cast-in anchors in outer panel.



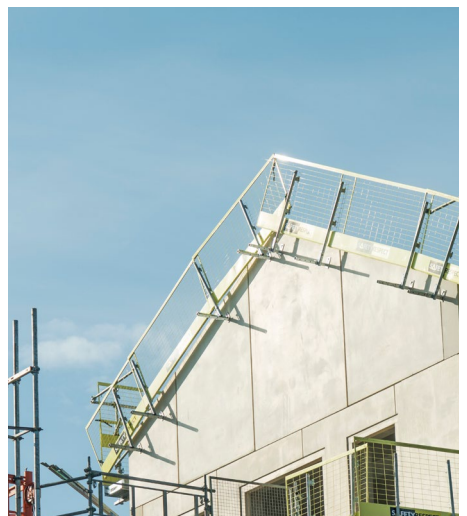
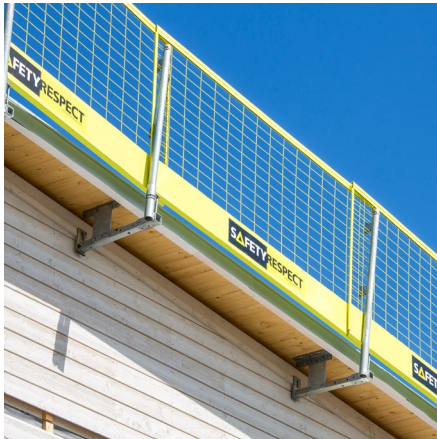
Sandwich wall with bricks. Holes through bricks, outer panel and insulation, threaded rod/expander bolt attached to inner panel.



Eave with drilled hole.



Sandwich wall with a threaded rod through wall.



We reserve the right to make any technical changes [221121]