

FLEX WORKING PLATFORM

TECHNICAL INFORMATION



**WE
SAVE
LIVES**

SAFETY RESPECT®

FLEX WORKING PLATFORM WALL

Art no 981119

- Attached to wall, M16.
- Preferably mounted in to cast-in anchors.
- Console weight 15 kg.
- Configurable height for different situations.
- Working width up to 1 m from the wall.
- Designed according to EN12811-1, load class 2 (1500 N/m²) and 3 (2000 N/m²).



FLEX WORKING PLATFORM EXTENDED

Art no 981129

- Attached to wall, M16.
- Preferably mounted in to cast-in anchors.
- Console weight 30 kg.
- Configurable height for different situations.
- Working width up to 1,5 m from the wall.
- Designed according to EN12811-1, load class 2 (1500 N/m²).



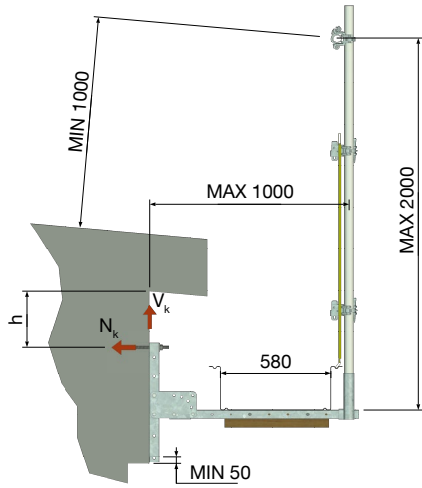
FLEX WORKING PLATFORM EAVES

Art no 981121

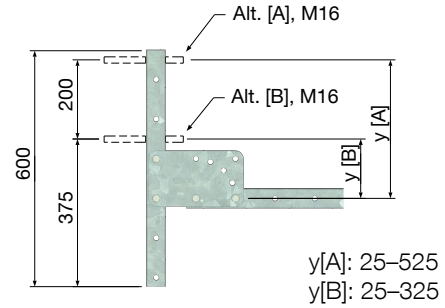
- Attached to eave, M12.
- Preferably mounted in pre-drilled Ø13 mm holes.
- Console weight 17 kg.
- Working width up to 1,5 m from the wall.
- Designed according to EN12811-1, load class 2 (1500 N/m²) and 3 (2000 N/m²).



FLEX WORKING PLATFORM WALL



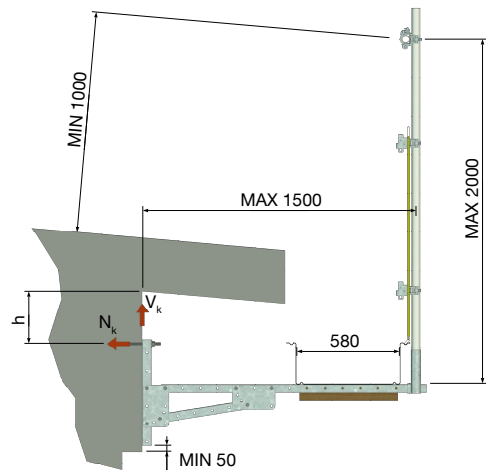
| ANCHOR LOADS (Q)* | |
|-------------------|--------|
| N_k | 8,0 kN |
| V_k | 3,6 kN |



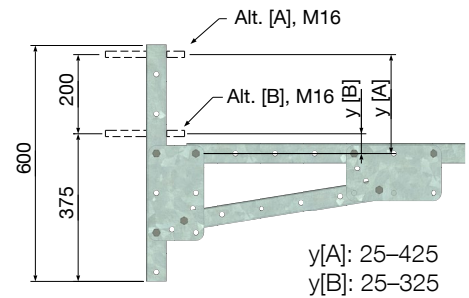
h: < 400 mm. Recommended height to ease mounting.

[mm]

FLEX WORKING PLATFORM EXTENDED



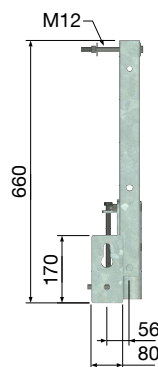
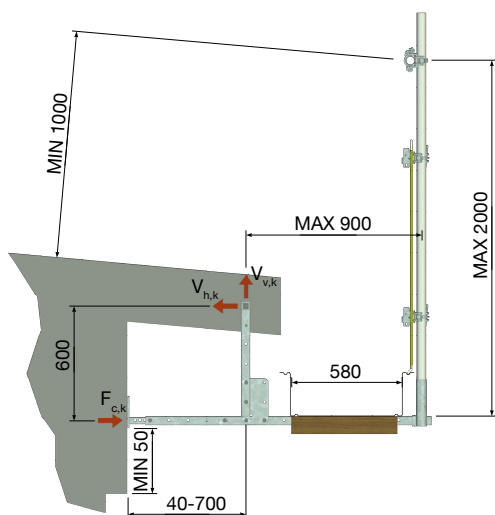
| ANCHOR LOADS (Q)* | |
|-------------------|---------|
| N_k | 12,6 kN |
| V_k | 3,6 kN |



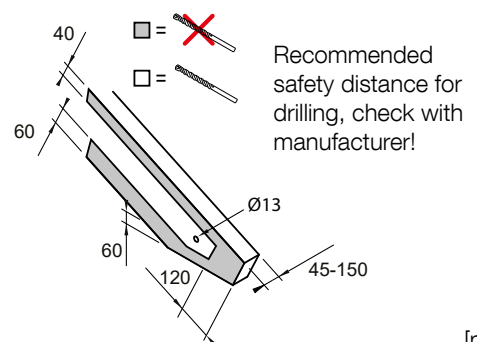
h: < 400 mm. Recommended height to ease mounting.

[mm]

FLEX WORKING PLATFORM EAVES



| ANCHOR LOADS (Q)* | |
|-------------------|--------|
| $V_{h,k}$ | 4,4 kN |
| $V_{v,k}$ | 3,6 kN |
| $F_{c,k}$ | 4,0 kN |



[mm]

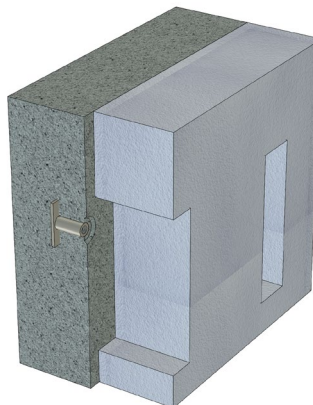
*Unfactored ($Q_{k,i}$). EN 12811-1: $Q_{k,i} \times \gamma_F = E_d < R_d = R_k / \gamma_M(k_{mod})$, where $\gamma_F = 1,5$ and where k_{mod} is used for timber.

ATTACHMENT METHOD

Illustrations are only examples. Attachment method and placing need to be assessed by general contractor/structural engineer.



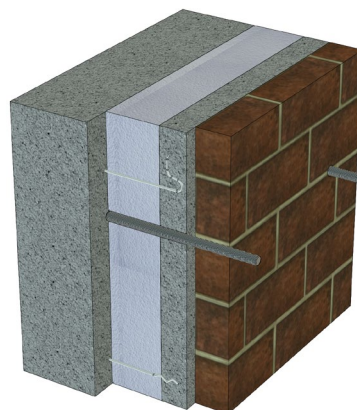
Solid wall with cast-in anchors.



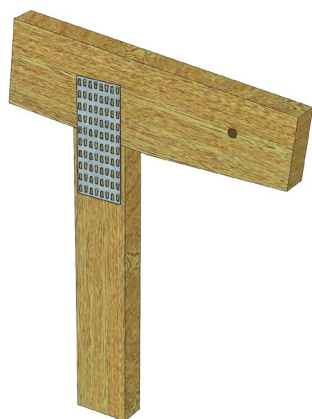
Insulated wall with cast-in anchors, cut-out insulation.



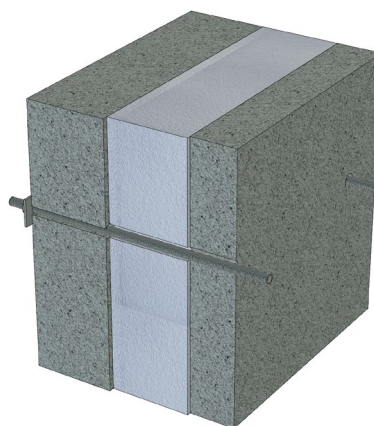
Sandwich wall with cast-in anchors in outer panel.



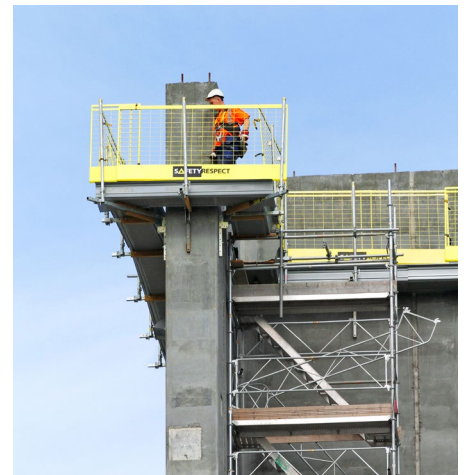
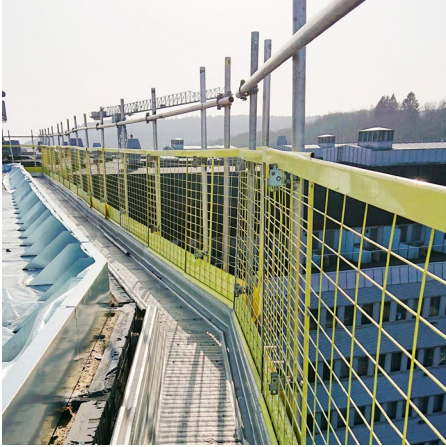
Sandwich wall with bricks. Holes through bricks, outer panel and insulation, threaded rod/expander bolt attached to inner panel.



Eave with drilled hole.



Sandwich wall with a threaded rod through wall.



We reserve the right to make any technical changes [221121]

info@safetyrespect.com
www.safetyrespect.com

